

Centre Stand Rubber

BSA
Part no. **57-2450UK**

Triumph
Part no. **57-2331**

Side Stand Rubber

Norton Commando 1972-75
Part no. **06-3324**

Chapter 17 Handlebars, Forks and Related Parts

BSA
A50/65 UK Models
Part no. **D324**



Most Export Models
Part no. **42-4968**

A50/65 Western Bar
Part no. **42-4968W**

A75R III USA Bar (Came on some A65 models)
Part no. **97-4252**

AJS/Matchless
Regular Street Bars Fitted to Most Models
Part no. **02-2484**



Norton/Matchless Hybrids

These are the low bars which give a riding position just above that provided by clip-ons. CSR's also came with a much lower bar, a flat Norton bar (see D348 below) or a higher bar very close to that on Export Commando's (06-1046)

G15CSR
Part no. **03-1604**

Atlas Scrambler G/N15CSR & P11
Part no. **03-0398**

P11A & Ranger
Part no. **03-1651**

This is a **very** confusing area, and you can't rely on the parts book. All the CS & Atlas Scrambler and P11 High Pipe models appear to have been supplied with the bars with the cross brace welded about 1" down from the top of the bars. The P11A & Ranger machines appear to have been supplied with two different types of bars. The one listed above (03-1651) is the same bend as 03-0398 except that it has the cross brace welded flush at the top. Most of the USA Export bikes appear to have been supplied with a similar bar except that it has a greater "pull back" angle and this we supply as
Part no. **03-1651A**

Norton



Flat Bar
Part no. **D348**

Commando European
Part no. **06-4132**

Commando USA Export
Part no. **06-1046**

Hi-Rider
Part no. **06-2599**

Atlas Export High Bar
Part no. **06-7803**

Triumph

TRW
Part no. **97-0659**

Pre-Unit (1" turned to 15/16" throttle end)
Part no. **98-83474**

T120 etc 1963-70 UK
Part no. **97-1871**

T120 etc (66-72) US Export
Part no. **97-1870**

T120 Western Bar
Part no. **97-4252**

750 Twins -Export Type raised
Part no. **97-7001**

Handlebars Continued

Sundry Other Bars

Standard British Motorcycle Flat (As A65, A10 etc.)
Part no. **D324**

Stand British Bar (Raised)
Part no. **HB5**

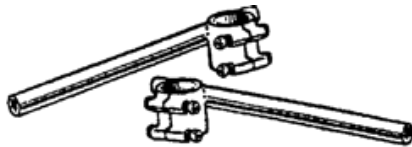
Senior Shallow Ace
Part no. **ZB87**



Sundry Other Bars Continued

34mm Clip-ons
Part no. **ZB400/34**

35mm Clip-ons
Part no. **ZB400/35**



(Quality British Made product)

Stainless Steel Handlebars Made in England

BSA

A10/65 etc UK LOW Bars
Part no. **D324S/S**

A10/65 etc with Export Bars
Part no. **42-4968S/S**

Norton Commando

EUROPEAN models
Part no. **06-4132S/S**

CANADA/USA Export models
Part no. **06-1046S/S**

Norton/Vincent

Flatbar
Part no. **D348S/S**

Triumph

66-73 650 Export models
Part no. **97-1870S/S**

Handlebar Fittings

BSA

Chrome Handlebar Clamps, fits all 1963-70, 250, 500, 441 & 650 machines.
Part no. **97-2655**

Chrome Bolts for Clamps
Part no. **97-2656**

Norton

Steel clamp for all models with Roadholder forks including Atlas, G/N15, Matchless G12, G80S & Commando
Part no. **06-7727**

Triumph

"P" Clamps & Fittings - Various models:

Cup (2 required)
Part no. **97-2221**

Bolt and Washer in Stainless Steel (2 required)
Part no. **E140**

Bolt (2 required)
Part no. **21-0589**

Washer (2 required)
Part no. **82-1335**

"P" Clamp (2 required)
Part no. **97-2291**

Hemispherical Washer (4 required)
Part no. **97-1529**

Spacer (2 required)
Part no. **97-1581**

Steady Rubber (2 required)
Part no. **97-1580**

Mounting Bush (2 required)
Part no. **97-1527**

Nut (2 required)
Part no. **14-1903**



Handlebar Fittings Continued

Triumph

10 Piece Kit for Fastening "P" Clamps to Mounting Bush 1 kit per machine (Contains 2 of each 97-1580, 97-1581, 97-2221 & 4 of 97-1529)

Part no. **97-2655**

Indian Made Economy "P" Clamps

Include top bolt, washer, lower nut and handlebar spacers

Part no. **97-2291E**

Handlebar Fittings Stainless Steel

Handlebar Clamp Screws Atlas & Matchless Models with Norton Forks

Part no. **FW11 (set of 4)**

Handlebar Clamp Screws Commando

Part no. **06-0335S/S (sold each, 4 required)**

Steering Lock (Good Quality)

Fits most BSA, Norton & Triumph models (Made in Uk)

Part no. **82-6738**



Key Blanks

Don't throw away your old lock!

For Reproduction Locks

Part no. **KEY3**

For Original Locks

Part no. **KEY2**

Steering Damper Knobs

Matchless

Part no. **01-7259**

AJS

Part no. **01-7260**



Norton

Part no. **B2/201**

AJS/MATCHLESS Friction discs

Part no. **00-0812**

Complete AJS/MATCHLESS Damper Assembly

Part no. **60009A**

Also suits P11



Headlight Brackets & Related Parts

AJS/Matchless

Most models with AMC forks including P11

Part no. **03-1546/7**



Headlight Brackets & Related Parts Continued

BSA

A50/65 1964-67 Models

Black

Part no. **68-5176/7BLK**

Chrome

Part no. **68-5176/7CRM**

A50/65 1968-70 Models

Black

Part no. **97-2510/2BLK**

Chrome

Part no. **97-2510/2CRM**



Norton/Matchless Hybrid

Black for Atlas, G/N15 & Early Commando

Part no. **03-1544/5**

Top Rubbers between 03-1544/5 and top clip

Part no. **06-7512**

Norton

Commando 69/70 R & S Models 3 piece set (Halo & 2 Support brackets)

Part no. **06-1239S**

Commando Chrome Brackets 1970 on (Genuine)

Part no. **06-2028/9pr**

"O" Rings for Bracket (6 required)

Part no. **622/101**

Triumph

Brackets for 500/650 Twins (painted black) 1965-67 Models

Left

Part no. **97-1888**

Right

Part no. **97-2162**

500/650 Twins (painted black) 1968-70 Models

Left

Part no. **97-2161**

Right

Part no. **97-2162**

1971-72 Triumph & BSA 650 Models Chromed Wire Brackets

Part no. **97-4058/60**

Inexpensive Generic Brackets

For use with clip-on bars Adjustable, will fit 34 & 35mm tubes as used on BSA, Norton & Triumph machines (oriental)

Part no. **09-0013**



UK made type, chrome plated rubber mounted

Part no. **C65**

Headlight Bolts & Spacers

This is a complicated area because so many bikes don't have the original LUCAS headlight bucket on them. We are therefore setting the fittings out by description.

5/16" Bolts For most machines 1969-70

Genuine LUCAS bolts (UNF)

Part no. **112560**

CEI Bolts used up to 1968

Part no. **112201**

Chrome Bolt & Washer Set (CEI) (includes 2 bolts, 2 washers)

Part no. **112201/CHR**

5/16 ID Mild Steel Headlight Spacer

Part no. **97-2631**

5/16" Stainless Steel Spacer

Part no. **97-1932S/S**

Special Washer 1971-72 A65/T120 etc

Part no. **83-2210**



Headlamp Shell

Chrome Bolts

5/16"X1"UNFChromeBolts for LUCAS & reproduction head- light shells to 1970. (Original shells were threaded 5/16" CEI (26tpi—use chrome bolt & washer set 112201/CHR). The reproduction shells and the ones LUCAS make now are threaded UNF.

Part no. **99-651C**

7/16" UNF Bolts Most post 1970 machines

Genuine LUCAS Bolts

Part no. **54104500**



Wire Bracket Mounting Rubbers

For 1971-2 BSA & Triumph 650/750

Upper

Part no. **83-2209**

Lower

Part no. **60-2630**

Stainless Steel Headlight Mounting Bolts & Spacers

Supplied with Stainless Steel Washers

5/16" CEI Cycle thread (26tpi) Bolts (fit most machines up to 1970)

Bolts

Part no. **FW21**

Spacer

Part no. **03-1555S/S**

3/8" UNF Bolts (Used on Early Commando's)

Part no. **CW20**

1971-72 Oil-in-Frame Bikes

Part no. **E153**

7/16" UNF Bolts (Most post 1970 bikes)

Bolts

Part no. **TF11**

Spacers:

Commando

Part no. **06-2035S/S**

Triumph

Part no. **TF88**

Steering Damper Kit

Genuine Norton, includes all fittings. For Commando

Part no. **06-4247**



Fork Tube (Stanchions)

Made in England unless otherwise stated.

BSA

B44R (21.8")

Part no. **41-5116**

A50/65 1966-67 & 1968 models with BSA Forks

Part no. **97-2636** Oriental Made **97-2636E**

A50/65 1968 on models with Triumph Forks

Part no. **97-3906** Oriental Made **97-3906E**

A65/75 1971-72

Part no. **97-4007** Oriental Made **97-4007E**

AJS/Matchless

1 1/8" Tubes used up to 1954

Part no. **01-6322**

Most models using 1 1/4" AMC tubes (including P11)

Part no. **02-2823**

Models 1964 on using Norton Forks

Part no. **03-0036**

Norton

P11 - See Matchless & AJS Above

Atlas/650SS

Part no. **06-7714** Oriental Made **06-7714E**

N15CS

Part no. **03-0036**

Commando

Part no. **06-3423** Oriental Made. **06-3423E**

Triumph

T100SS, T120, TR6 1960-63

Part no. **97-1299**

500/650 Twins 1964-67

Part no. **97-1889** Oriental Made. **97-1889E**

500/650 Twins & 69-70 Triples, all models 1968 on using "shuttle valve" forks

Part no. **97-3904** Oriental Made **97-3904E**

Hard Chrome type

Part no. **97-3904C**

All Twins & Triples 1971-72 using Conical Front Hub

Part no. **97-4007** Oriental Made **97-4007E**

750 Twins & Triples 1973 on Disc Brake Models

Part no. **97-4380** Oriental Made **97-4380E**



Special Order Parts

Triumph Hurricane Fork Yokes

Upper

Part no. **97-4189**

Lower

Part no. **97-4183**

Stock Fork Springs

BSA A50/65 1963-70

Part no. **97-3678**

Triumph Twins & Triples 1963-70

Part no. **97-1891**

Oil-in-frame - Also for other 1971 models with conical hubs

Part no. **97-4011**

Fork Springs Progressive Suspension

We stock the following superior quality springs

BSA A50/65 Etc 1962-70

Part no. **97-3678P**

Norton - Most Models and All Commano's 1953-75

Street Use

Part no. **76-1119**

Race Use

Part no. **76-1106**

Triumph

500 Twins 1964-72, 650 Twins 1964-70

Part no. **97-1891P**

Triumph/BSA

Oil-in-Frame models

Part no. **76-1114**

UK Made Progressive Springs

Part no. **97-4011P**

Fork Parts

BSA & Triumph Models with Triumph "Shuttle Valve" Type Forks (Includes most bikes from 1968 prior to the conical hub)

Plastic Damper Sleeve (Needs Shortening for BSA Models)

Part no. **97-1896**

Top Bush

Part no. **97-0441**

Lower Bush

Part no. **97-0443**

Oil Seal Holder
Part no. **97-3633**

Seal Holder "O" Ring
Part no. **97-2119**

Spring Upper Seating Washer
Part no. **82-4047**

Top Chrome Nuts
Part no. **97-2245 (slightly convex shaped top)**

For Type with thicker flat top
Part no. **97-2245TJW**

Shuttle Valve
Part no. **97-2154**

Circlip for Same
Part no. **97-2127**

Stanchion Bottom Nut
Part no. **97-2091**

Upper Spring Cup
Part no. **97-1657**

Parts for Other Triumph Models

Oil Seal Holder 1963-67
Part no. **97-1654**

Pre-Unit Holder
Part no. **97-1194**

Retainer Front Brake cable to lower triple tree
Part no. **97-2270**

Fork Bush & Oil Seal Set

*500 Twins 1964-74, 650 Twins 1964-70, 750
Triples 1969-70*
Part no. **PS140**

*Lower Slider Caps BSA & Triumph 1971 on
Models with Conical Hub. Regular Quality*
Part no. **97-3947**

*Much stronger caps made from
Aircraft quality aluminum*
Conical Front Hub
Part no. **97-3947A (Pr)**



For Disc Brake models
Part no. **97-4456/7A**

Dampering Ring Kit (Better Performance than "O" Rings)

*By L P Williams For 1971 on BSA/Triumph
oil-in-frame front forks. improves valving.*
Part no. **97-4003P**

AJS/Matchless/P11 Norton

Plastic plugs for Stanchion Top Bolts
Part no. **02-2216**

Fork Bush & Oil Seal Set

BSA A10, A65, B44VS etc
Part no. **PS147**

*For AJS & Matchless models 1955-68 with
1 1/4" fork tubes Set of 4 Bronze bushes*
Part no. **02-1495/2700**

Oil Seal Holders

BSA A10 & A65 (Also several other models)
Chrome Oil Seal Holder
Part no. **41-5142**

Models 1968-70
Metal Cable Guide
Part no. **97-2658**



Bracket - Fits under Fork Tube Top Nuts
Grommet
Part no. **97-2659**

Guide (Stainless Steel) with rubber
Part no. **97-2658/9S/S**

Norton Atlas/ Early Commando
Chrome oil seal holder
Genuine Part no. 06-0350
Reproduction Part no. 06-0350E

Fork Parts

*BSA Forks to 1968 NOT models with Triumph
Forks*

Fork Stanchion (Tube) Polished Top Nut
Models with Full Width Hubs to 1965
Part no. **BF230**

Models with Half Width Hub
1966-68
Part no. **BF234**



Polished Washer for Top Nut
Part no. **06-7511S/S**

*Polished Steering Column Top
Nut (Drilled for Steering Damper)*
Part no. **BF17**

Polished Handlebar Clamp Bolts 1963-70
(4 required) 1963-70
Part no. **BF16**

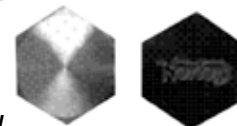
*Polished Front Wheel Spindle 1966-68 type
which screws into fork leg (LH thread)*
Part no. **BF5**

Pinch Bolt & Washer For Fork Lower Leg
1966-68 only
Part no. **BF14**

AJS/Matchless

*Chrome Oil Seal Holder Models with Norton
Forks*
Part no. **03-0453**

Stainless Steel
Part no. **03-0453S/S**

Norton*Atlas/Commando:**Top Bush**Part no. 06-7521**Lower Bush**Part no. 06-7519**P11 Fork Stop Bolts**Part no. 02-6529**P11 Top Stanchion Bolts (PR) in Stainless Steel with grommets**Part no. 02-7047S/S***Bush & Seal Kit***For all models with Roadholder (Genuine) Forks, includes AJS & matchless 1964 on (not G80CS & P11) and Royal Enfield Interceptor MK2 Contains 4 bushes, 2 seals & 2 gaskets**Part no. T1048/55**Commando Chrome Top Nuts**Part no. 06-0345***“Roadholder” Brass Badges***Part no. 06-7114**Rivits for Badges (set of 4)**Part no. 06-9134***Norton Fork Parts Stainless Steel****Polished Oil Seal Holders***Atlas & Commando to 1970**Part no. 03-0454S/S**G/N15CS**Part no. 03-0453S/S**Commando 1971 on**Part no. 06-1137S/S***Atlas/G/N15***Damper Tube Bolt**Part no. 06-7635S/S**Polished Stanchion Top Nut**Part no. 06-7682S/S**Steering Column Adjuster Nut (26tpi)**Part no. 06-7652S/S**Column Top Nut**Part no. 06-7746S/S***Commando Atlas &G/N15***Washer for Stanchion Top Nut**Part no. 06-7511S/S***Commando Atlas &G/N15 Continued***Washer for Steering Column Top Nut**Part no. 06-7650S/S**Top Cover Plate for Steering Bearing**Part no. 06-7651S/S**Damper Tube Washer**Part no. 06-7517S/S***Commando***Steering Column Adjuster Nut (28 tpi)**Part no. 06-0341S/S**Polished Top Nut**Part no. 06-0340S/S**Polished Stanchion Top Nut**Part no. 06-0345S/S**Fork Drain Plugs:**Original Shape**Part no. 06-0354S/S**Allen Type**Part no. 06-0354AS/S**Steering Column Lower Nut 1971 on**Part no. 06-7781S/S**Lower Yoke Socket Pinch Screw 1971 on**Part no. 06-1911S/S***Norton Commando Top Nut***Polished Aluminum**Part no. 045DRL**Black Anodized and Engraved**Part no. 03-0453S/S***Aluminum Fork Tube Caps***Triumph & BSA Oil-in-frame Models 1971 on. One piece cap replaces one piece cap on drum brake models and two piece cap on disc brake models**Polished Aluminum**Part no. 042DRL**Black Anodized and Engraved**Part no. 042-EDRL*

Triumph Stainless Steel Fork Parts

500/650 Twins 1969 on

Steering Column Clamp Bolt & Nut
Part no. **E152**

Spindle Cap Bolt/Washer
Part no. **E157**

Polished Stanchion Top Nut
Part no. **97-2245S/S**

Polished Steering Column Top Nut
Part no. **97-2263S/S**

Stanchion Clamp Bolt, Nut & Washer
Part no. **E155**

Oil Seal Holder (mirror polished)
Part no. **97-3633S/S**

Oil-in-frame 650 Twins

Polished Stanchion Top Nut
Part no. **97-4258S/S**

Washer for Above
Part no. **97-4166S/S**

750 Twins 1973 on

Steering Column Top Clamp Bolt, Nut & Washer
Part no. **TF7**

Polished Stanchion Top Nut
Part no. **97-4395S/S**

Washer for Above
Part no. **97-4166S/S**

Polished Column Top Nut
Part no. **97-4317S/S**

Allen Type Drain Screw
Part no. **97-3894AS/S**

Mirrors

Chrome Universal Shorty Mirror - Adjustable head, fits all bars 3/4" to 1"
Part no. **05-00101**

Chrome Universal Mirror as 05-00101 but with 8" Stem
Part no. **05-00320**



Economy Bar End Mirrors

Fully Adjustable

Chrome
Part no. **05-00553**

Black
Part no. **59-34010**



Norton Commando Mirrors

Rectangular head, fit to 3/8" tapped hole in lever brackets
Part no. **06-4102**



Triumph & BSA Model

Round head, fits through 5/16" unthreaded hole in lever brackets - secured by lock nut) 1970 on
Part no. **HBM008**



Halcyon Mirrors

Top Quality British Made Stainless steel heads & arms. Easily replaceable mirror heads and glass. The mirrors are interchangeable and are suitable for left or right hand sides.

Continental Style Handlebar Mirror Two piece chrome plated clamps secure to 7/8" or 1" bars.

Rectangular Type
Part no. **850**

Circular Type
Part no. **860**



Continental Style Bar End Mirror

Rectangular Type
Part no. **820**

Circular Type
Part no. **830**



Control Levers (for 7/8" bars unless otherwise stated)

Levers supplied on British bikes were primarily made by AMAL or DOHERTY. We carry an extensive range of quality DOHERTY levers which are still in production and which we obtain directly from the factory. AMAL levers are not currently being made however those made by DOHERTY are almost identical.

DOHERTY Air/Mag Control Levers

Heavy chrome plated, for 7/8" bars

Left Hand

Part no. 100L/H

Right Hand

Part no. 100R/H



Oriental Reproductions

Left Hand

Part no. 100L/HE

Right Hand

Part no. 100R/HE



Decompressor Levers

Trigger Type for 7/8" bars

Part no. 105

Ball Ended Version (recommended for competition use)

Part no. P296

Type 107P Standard Doherty British Lever –No Adjusters

Bar Size	Centre Size	Clutch Part No.	Brake Part No.
For 7/8" Bars	1 1/8" Centres	P297	107P
For 7/8" Bars	7/8" Centres	P291A	P292A
For 1" Bars	1 1/8" Centres	K447	K448
For 1" Bars	7/8" Centres	K644	K645

Oriental Reproductions

Clutch

Part no. P297E

Brake 1 1/8" centres

Part no. 107PE



Type 107PA (Doherty)

As Type 107P but with Adjusters

Clutch

Part no. 107PA/LH

Brake

Part no. 107PA/RH

Type 207 (Doherty)

Heavy Chrome Plated 7/8" levers, ball ended, no adjuster. For most post 1965 bikes and for all competition models.

Clutch

Part no. 207P/LH

Brake

Part no. 207P/RH

Type 207PA (Doherty)

As Type 207 but including screw-in-adjuster

Clutch

Part no. 207PA/LH

Brake

Part no. 207PA/RH



Type 208PA (Doherty)

As Type 207PA but gusseted for extra strength

Clutch

Part no. 208PA/LH

Brake

Part no. 208PA/RH

Type 108 - Combination Clutch/Mag or Air/Brake Lever (Doherty)

No Adjuster Clutch/Mag

Part no. 108

Brake

Part no. P322

We can also supply this lever with or without Ball ended lever blades.

Type 219 (Doherty)

Heavy Chrome Plated, ball ended, incorporating cam action finger tip adjusters. Used as original equipment by leading manufacturers.

Part no. 219L/H (1 1/8" centres)

Part no. P273 (7/8" centres)

Brake 1 1/8" centres

Part no. P310 (1 1/8" centres)

Part no. P274 (7/8" centres)



Best quality clutch & brake/choke lever sets

Type used many BSA & Triumph models up to 1969

With slide in cam adjusters

Part no. 60-2073/4 (pr)

1970 Type with mirror holes in the perches

Part no. 60-2241/2(pr)

Reproduction Of Amal Type 534 Alloy Levers (with adjusters)

Clutch Lever
Part no. 83029

Brake lever
Part no. 83030



Oriental Reproduction Levers

For Triumph & BSA models
1970 onwards

Clutch Air/Brake
Part no. 60-2242 Part no. 60-2241

Brake Lever with mirror hole but without Air (Choke) lever, as fitted to several export models
Part no. 60-2243

Economy Levers

Chrome plated with adjusters.
Clutch Air/Brake
Part no. 09-615 Part no. 09-616

Lever Parts

For Doherty Levers

7/8" Lever Clip
Part no. 98-1017

1" Lever Clip
Part no. 98-1011

Pivot Screws & Nuts

Original & older reproduction levers used 1/4" BSF thread

Pivot Screw Regular Steel
Part no. 10I2

Pivot Screw Stainless Steel
Part no. 18I087S/S

Nut Only Stainless Steel Later DOHERTY type use 10mm
Part no. 18I053S/S

Pivot Screw & Nut
Part no. 0731D

Cables Adjuster (Screw in type)
Part no. 10I4

Adjuster Locknut For Screw-in Cable Adjuster
Part no. 10I5



Pivot Screws & Nuts Continued

Cable Adjuster (Cam Type - slide in)
Part no. 18I1708

Lock Nut (Cam Type)
Part no. 18I1709

Reproduction Cam adjuster and lock nut set
Part no. 83098

Plain Blade - Clutch
Part no. 1070L/H (1 1/8" Centre)
or Part no. 18I528 (7/8" Centre)

Plain Blade - Brake
Part no. 1070R/H (1 1/8" Centre)
or 18I535 (7/8" Centre)

Ball End Blades:

Clutch
Part no. 2070L/H (1 1/8" Centre)
or 18I752 (7/8" Centre)

Brake
Part no. 2070R/H (1 1/8" Centre)
18I754 (7/8" Centre)

Lever Clip Screw
Part no. 71I7

Twistgrip Slotted Stop
Part no. 99-0241

Lever Clip with LUCAS switch mounting screws:
7/8"
Part no. 301

1 1/8"
Part no. 302

Special Handlebar Stainless Steel Screws

5/8" Screws -BSA Triumph Switches 1971-72
Norton Commando 1971-74 Clutch Side Drum
Brake Switch

Philips Type Allen Type
Part no. 06-2488S/S Part no. 06-2488AS/S

Norton Commando Brake Disc Switch 1971-73

2" Allen Type
Part no. 06-2241AS/S

Front Master Cylinder Retaining Screws (Sets)

Triumph 750 Twins etc
Allen Screws
Part no. TF94

Triumph 750 Twins etc
Clutch Lever Clamps Screw
Part no. 11I014S/S

Slot Screws
Part no. TF4

Twist Grips

Genuine AMAL Twist grips- Type 16 Single pull type used by most British Manufacturers 1920's-1960's. Manufactured to high standard using original drawings.
Part no. **16/364A**

Type 313 Twin Pull Type as Fitted to Numerous Machines
Part no. **313/2NG**



Handlebar grips and cable stops have to be ordered separately unless otherwise stated

Doherty Type No 71

Incorporates reliability with smooth action. Clean & smart in appearance, heavy chrome plating. With friction adjustment

7/8" Bars
Part no. **16/364D**

1" Bars
Part no. **98-061**



Twist Grip Cable Stop
Part no. **99-0241**

The part which fits into the bottom of the Doherty twist grip supporting the end of the cable.

Doherty Type No 74

Ideal for competition machines - fast action with built-in cable stop and nylon rotor drum. Heavily Chrome Plated.

7/8" Bars
Part no. **83128**

1" Bars
Part no. **98-0741**

Replica of Doherty 77 Twin Pull Throttle
Double drum assembly, manufactured in aluminium for 7/8"
Part no. **P326**

Pre Unit Triumph Twistgrip
Suits TRW etc
Part no. **97-0697**



Replica of Original Amal 364 Type (7/8")
Part no. **364/TGE**

Replica of Original Amal 313 Type Twin Cable Twistgrip
Part no. **313/13**

Stainless Steel Amal Lever and Twistgrip Parts

Beautifully made copies of the original screws used on the levers and throttles of most British bikes. 1BA Screws:

7/8"
Part no. **11/013S/S**

9/16"
Part no. **11/014S/S**

1/4" CEI Lever Pivot Screws
Part no. **18/087S/S**

Lock Nut for Pivot Screw
Part no. **18/053S/S**

Handlebar Grips

Triumph Grips

For 1" Bars as fitted to many pre-unit models
Part no. **97-0230**



Doherty Supra Grips

Standard ribbed pattern for 7/8" bars, our most popular grip
Part no. **RB1**



Amal Replica Grips

For regular 7/8" bars
Excellent quality British made grips - as original equipment on numerous machines up to 1968
Part no. **RB3**

1966-67 Triumph Grips

1966 Grey Type
Part no. **RS083A**

1966 White Type (Used on Show Bikes)
Part no. **RS083B**

1966-67 Black Type
Part no. **RS083C**

GT Type Grips

For regular 7/8" bars. Same style as original equipment on most post 1968 British bikes

Genuine - Made in Italy
Part no. **HBG001G**

Good Quality Reproduction
Part no. **HBG001**



Reproduction Of Amal Type 534 Alloy Levers

(With adjusters)
Part no. **05-00101**

Chrome Universal Mirror as 05-00101 but with 8" Stem
Part no. **05-00320**

Fork Gaiters

The gaiters marked '**' do not use gaiter clips.
NOTE: The long European types for Commando (06-5743) and late Triumph (97-1510) are designed to fit tightly and should be carefully installed using tire soap.

BSA

A7/10 & A50/65 (to 1967)
Part no. **42-5320**

A50/65 1968-70 & B25/44 Foreign Reproductions
Part no. **97-2513**

A50/65 1968-70 & B25/44 Made in UK
Part no. **97-2513UK**

A75 1969-70 Foreign Reproductions
Part no. **97-3635**

A75 1969-70 Made in UK
Part no. **97-3635UK**

A65/70 1971 on
Part no. **97-4002**



Matchless

G15CS & CSR Made in UK
Part no. **02-0463 02-0463G (Genuine)**

Norton

N15CS 1964-68 P11 & Commando 1968-70
Made in UK
Part no. **02-0463 or 02-0463G (Genuine)**

Commando 1970-75 Short
Part no. **06-1115 (UK Made)**
or **06-1115E (Reproductions)**



Commando 1970-75
Long European
Part no. **06-5743 (regular)**
Or **06-5743G (Genuine Andover Norton)**



Triumph

TR25W 1968-70
Foreign Reproduction
Part no. **97-2513**



TR25W 1968-70
Made in UK
Part no. **97-2513UK**

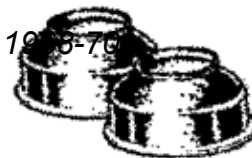
500/650 Twins 1964-67
Foreign Reproduction
Part no. **97-1645**



500/650 Twins 1964-67
Made in UK
Part no. **97-1645UK**

500/650 Twins & 750 Triples 1968-70
Foreign Reproduction
Part no. **97-3635**

500/650 Twins & 750 Triples 1968-70
Made in UK
Part no. **97-3635UK**



All Models 1971 on
Part no. **97-4002**

Full Length Option (European style for 750 Twins)

Part no. **97-1510**

Gaiter Clips

BSA Type - suits other makes

Stainless Steel
Part no. **F11**

MATCHLESS G80CS

Stainless Steel Gaiter clips, exact reproductions of originals, Specially made for us. Can be bead blasted to give original Cad appearance
Part no. **04-2775/1**

Norton - P11, P11A & Ranger

Top Clips
Part no. **04-2775**

Lower Clips
Part no. **03-3217**

Triumph

Pre-1967 models (Nice quality made in UK)
Part no. **60-0340**

1967 Models (Spring wire type)
Part no. **97-2083**