

Rebuild Kit (3 ea screws, washers & rubbers)

Part no. 09-00340

Reset Knob 50mm

Part no. 09-00140

Reset Knob 38mm

Part no. 09-00140/38

Tachometer Drives

Norton Atlas/ G/N15 etc 1:1 Ratio

Part no. BG1508/05

Early Commando 2:1 Ratio

Part no. BG1508/06

71 Onwards Commando type

From Norvil with special oil seal

Part no. 06-5200C



Chapter 12: Frame Parts

Swing Arm Bushes & Related Parts BSA

A50/65 1963-68 Bush (Metalastic)

Part no. 42-4362

BSA/Triumph Oil-in-frame Twins

Swing Arm Spindle

Part no. 83-2691

Bush

Part no. 83-2521

Rubber Sleeve

Part no. 83-2692

Norton/Matchless P11

Bush (4 required)

Part no. 03-2184

Norton Commando

Featherbed, inc Atlas

Metalastic Bushes (Pr)

Part no. 06-7767

Kit of Bronze bushes to replace 06-7767

Part no. 06-7767A

Commando

Swing Arm Spindle

Part no. 06-0453

+.005" Oversize Spindle

Part no. 06-0453A

Bush

Part no. 06-0447

Large 'O' Ring

Part no. 06-0449

Small 'O' Ring

Part no. 06-0448

Triumph

T100 1969-74

Spindle

Part no. 82-7342

Bush

Part no. 82-4076

650 Unit Construction Twins (to 1970) & T150 Models

Bobbin (sleeve)

Part no. 82-6821

Bobbin Bush

Part no. 82-6042

'O' Ring

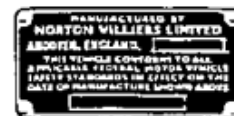
Part no. 82-8090

Frame ID Plate

Norton Commando

Rivets for plate (4 required)

Part no. 06-1287



750 Models 1968-70

Part no. 06-1286

750 Models 71-73

Part no. 06-3247

850 Models 73-74

Part no. 06-3247

850 Models 75 (USA)

Part no. 06-6213

UK Licence Disc Holder

Stainless Steel

Part no. C171A



Grab Rails (Lifting Handles)

BSA

A50/65 to 1970 Chrome

Part no. 68-9327



Norton

Dominator/Atlas Chrome

Part no. 98-0792

Commando

Chrome Regular UK Made Quality

Roadster

Part no. 06-4978



Interstate

Part no. 06-3632

Genuine Norton

Roadster

Part no. 06-4978G

Interstate

Part no. 06-3632G

Genuine Grab Rail Clips (4 Required)

Part no. 06-3641

Grab Rails (Lifting Handles)

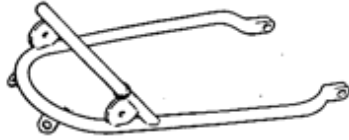
Continued

Triumph

T100 (1971-4) & T160 Chrome
Part no. 83-5147

500/650 Twins (1970 models) Black & Chrome
Part no. 98-0798

T140 Chrome
Part no. 83-5145



Oil Tank Rubbers

BSA

A50/65
Part no. 68-8315



B44 Etc
Part no. 82-9127

Norton Commando

Upper Mount Genuine Norton put (2 required)
Part no. 06-0636G

Upper Mount - Stainless Steel (2 required)
Part no. 06-0636S/S

Lower Mount
Part no. 06-0811

Triumph 1963-70 650 Models & 500 Twins to 1974

Lower Gromment
Part no. 82-6039

Upper Gromment - Also supports battery box & side covers (6 required)
Part no. 82-6673

1963-70 650 Triumph Oil tank Support Bracket
Part no. 82-6147

Oil Tank Caps

Chrome 2" Push & Turn Type:
Fits numerous British machines

Non-vented Type
Part no. 02-5352

Vented Type
Part no. 99-002



Oil-in-frame

Oil cap with dipstick
Part no. 71-3463

Oil Tank Cap Sealing Washers

BSA, Norton & Triumph - most models
Part no. 82-4047

Oil Tank Heat Shield

For AJS & Matchless models (except G80CS, G85CS, & P11) 1963 onwards.

Includes G & N15
Part no. 02-9593



Magnetic Drain Plug

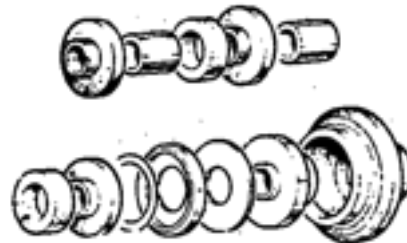
As Triumph Part No F5343 (82-5343) fits most Triumph oil tanks
Part no. 82-5343A

Oil Tank Drain Plug

For 650 Twins 1969-70 & 500 Twins 1969-74
Stainless Steel
Part no. 82-5343S/S

Norton Isolastic Parts

In addition to the genuine PTFE side play washers we also offer a nylon variety made for Norvil in the UK. These seem to withstand very cold temperatures experienced in Canada and the Northern USA better than the PTFE type.



Front Mounting Parts:

Gaiter - not MK3
Part no. 06-3718

Gaiter - MK3
Part no. 06-4674

Side Play Washers (Nylon)
Part no. 06-4748N

Side Play Washers (Genuine)
Part no. 06-4748G

(Replace PTFE washers 06-3556)

Norton Isolastic Parts Continued

Front Shim

.005"

Part no. **06-0686**

.010"

Part no. **06-0687**

.020"

Part no. **06-0688**

.030"

Part no. **06-0689**

Mounting Rubber (2 Required)

Part no. **06-1226**

Buffer Rubber (2 Required)

Part no. **06-1278**

Stainless Steel Front Mounting Bolt, Nut & Washer Set

Part no. **CE50**



Rear Mounting Parts:

Gaiter - not MK3

Part no. **06-3719**

Gaiter - MK3

Part no. **06-4666**

Side Play Washers - same as front

Rear Shim

.005"

Part no. **06-0775**

.010"

Part no. **06-0776**

.020"

Part no. **06-0777**

.030"

Part no. **06-0778**

Mounting Rubber (3 Required)

Part no. **06-1227**

Buffer Rubber (2 Required)

Part no. **06-1280**

Stainless Steel Front Mounting Bolt, Nut & Washer Set

Part no. **CE51**

MK3 Conversion Kit

Convert your 1968-74 machine to 1975 specs. With vernier side play adjustment. You get the centre piece with the rubber mounts and buffers installed, together with Stainless Steel end fittings. No modification to machine required.



Front Kit

Part no. **06-6125P**

Rear Kit

Part no. **06-6126P**

Gaiters and new side play washers (if required) not included

Complete Kits Genuine

Include side plate washers and gaiters

Front

Part no. **06-7337**

Rear

Part no. **06-7117**

Special "Pillar Type" Allen Bolt for retaining Head Steady - extended for easy access on 850 models and all machines with later type steady.

Part no. **06-7745P**

Adjusting Tool For Mk3 Type Isolastics

Part no. **06-6532**

Genuine Norvil Head Steady Assembly

Fits under steel & Fiberglass tanks

Part no. **06-6125**



Fibreglass Side Cover

BSA

A50/65 Models:

Twin Carb Models 1967-70

Left Hand

Part no. 82-9805F

Right Hand

Part no. 82-9806F

Single Carb Models 1967-70

Left Hand

Part no. 82-9846F

Right Hand

Part no. 82-9847F

Oddie Retaining Stud

Long

Part no. 60-1006

Short

Part no. 60-0982

Oddie Rubbers

Thin Outside

Part no. 60-0985

Thick Outside

Part no. 60-0984

Norton Commando Side Covers

The following chart lists the Commando side covers we stock. These are made in England.

Fiberglass covers are stocked in gloss black. We can also special order the following solid colours Red, Green, Yellow & White.

For L/H covers for R & S models you also need to

purchase (or remove from your existing cover) and rivet on the metal bracket

06-9425.

Steel Covers are in bare metal.

Fibreglass Cover

Year	Model	L/H Cover	R/H Cover
1968-69	Fastback	06-0854	
1969-70	R & S	06-1202	06-1213
1970-72	Fastback	06-1785	06-1675
1971-73	R	06-1687	06-1693
1971-72 & 1973 750 Interstate	Interstate	06-3176	06-3177
1973-74	850 Interstate	06-4081	06-3177
1974	R	06-4996	06-1693
1974	R	06-6330	06-1693
1975	Interstate	06-6329	06-3177

Steel Covers

Year	Model	L/H Cover	R/H Cover
1971-73	R	06-1687/93M (pr)	
1974-75	R		06-1693M
1971-72	Interstate	06-3505/6 (pr)	
1975	Interstate		06-3177M

Steel Bracket

Rivet to L/H Roadster & 'S' Cover
Part no. 06-9425

Right hand bracket
Part no. 06-1205

Dzus Fastener

Fits Through Frame
Part no. 06-2489

Circlip

To Retain Fastener
Part no. 06-1341

Curly Wire

Rivet to Bracket - for Dzus to Clip to
Part no. 06-1676

Side Cover Grommet

Fits on frame

Fibreglass Left Side Cover
Part no. **06-1206**

Steel Side Left Side Cover (later models)
Part no. **06-3143**

Original Fastback Fastenings

Rotor Lock
Part no. **06-0848**

Receptical
Part no. **06-0852**

Spacer
Part no. **06-0851**

Grommet

For bottom of Commando oil tank cover
Part no. **06-1686**

Domi

Inc Atlas Stainless Steel Tool box lid screws
Part no. **06-7734S/S**

Norton/Matchless P11 Side Cover

Supplied without bracket

Bare Steel Reproduction
Part no. **03-4075S**

Carbon Fibre
Part no. **03-4075C**

Triumph Fibreglass Reproduction Side Cover

500 & 650 Twins (Not Oil-in-Frame)

Up to 1966 (2 Switch type)
Part no. **82-6931FG**

1967 (1 Switch Type)
Part no. **82-7359FG**

1968-70 Type
Part no. **82-8042F**

Retaining Knob
Part no. **83-1357**

Mounting Rubber
Part no. **82-6673**

T150 1971-74

Left Hand
Part no. **83-2031**

Right Hand
Part no. **83-3236**

Special Purchase

Fiberglass Covers to fit 1971 onwards Oil-in-Frame models to give the appearance of the earlier models.

Left Hand
Part no. **TSF014**

Right Hand
Part no. **TSF014A**

Triumph Steel Cover

Excellent quality bare steel reproduction of side cover, with tool kit "pocket" for 1968-70 500 & 650 Twins
Part no. **82-8042**



Sundry Frame Parts

Mild steel parts in primer

Norton/Matchless Hybrids (G/N15) Engine Plate Cover

Over Transmission
Part no. **03-0238**

P11 Sump Plate

Aluminum - as original, complete with clips
Part no. **03-3086**

G/N15CS Crankcase Shield

Part no. **02-6334**

Clips (2 required)

Part no. **02-6491**



Triumph Tool Tray 1966 Twins

Part no. **82-6901**

Commando Mk3 Tool Tray

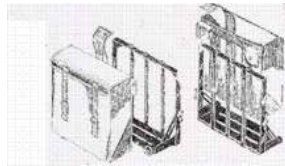
Part no. **06-5616**

Pannier Sets

Panniers with canvas bag (set) and folding steel frames. For military machines such as BSA M20, Ariel W-NG, Triumph TRW, Matchless G3L and Velocette MAF. These fit existing pannier racks on most World War 11 era English military motorcycles.

Part no. **82-2261/3**

Canvas Bag
Part no. **SPE020**



Rear Chainguards (High Quality)

BSA

A7/10 Black
Part no. **42-7730**

A50/65 to 1968 Bare Steel
Part no. **68-7722**

A50//65 1969-70 Bare Steel
Part no. **82-9192**

B25 1969-70 Bare Steel
Part no. **82-9950**

A75 1969-70 Bare Steel
Part no. **82-8490**

AJS/Matchless Bare Steel, Swing Arm Models

1949-53
Part no. **01-4489**

1954
Part no. **02-1018**

1955-56
Part no. **02-1576**

1957-62
Part no. **02-4154**

1963-68 G15 (also fits N15CS)
Part no. **02-9469**

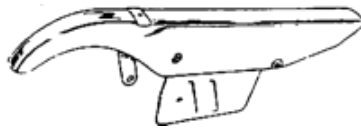
1959-68 G80CS
Part no. **02-2461**

Norton

7,77,Nomad Primer
Part no. **99-0007**

Pre 1956 Wideline Primer
Part no. **99-0055**

Post 1955 Wideline Primer
Part no. **99-0056**



Rear Chainguards Continued

Slimline 1960 on Primer
Part no. **21832**

Commando Models

P11A Primer
Part no. **03-4033**

Fastback Primer
Part no. **06-0456**

1969-70 "S" & Roadster Primer
Part no. **06-1272**

1971-74 Models Chrome
Part no. **06-1865**

1971-74 Stainless Steel
Part no. **06-1865S/S**



Triumph

T100 Primer
Part no. **82-4198**

650 Twins

1963-69 Primer
Part no. **82-7067**

1970 Primer
Part no. **83-1512**



750 Twins
Chrome
Part no. **83-2641**

Primer
Part no. **83-2641P**

T150 Primer
Part no. **83-3231**

Triumph Chainguard Inspection Grommet

Plain as Original
Part no. **83-3068**

With Triumph Logo
Part no. **83-3068A**

Walridge Specials For G15/N15 & P11

Stainless Steel (UNF) Shock Mounting Nut, Bolt
& Washer Kits

G/N15CS
Part no. **99-N15KIT**

P11 & P11A
Part no. **99-P11KIT**

G15CSR
Part no. **99-G15CSRKIT**

Stainless Steel Rear Shock Absorber Bolt Set

Triumph 650 Twins 1969-70 & 1969-73 500
Twins
Part no. **3F43**

Special Purchase

Ajs & Matchless Tool Box (Also Norton N15)
1963-69

Tool Box
Part no. **03-1520**

Tool Box Lid
Part no. **04-8300**

Chrome Screw
Part no. **01-4511**

NJB Rear Shock Absorbers

NJB is a small UK company run by Norm Blakemore who was formerly a development engineer with GIRLING. They offer good quality shocks for street bikes, motocross, trials & road racing. We can supply shocks for most applications, please ask if you don't see what you need.



Street Shocks Supplied with 5 position cam adjusters and adjuster tool.

BSA - A7/10, A50/65 (62-70), Norton/Matchless G/N15CS & Triumph Hurricane - Part no. **NJB1DL****

Norton Atlas - Part no. **NJB2ATLASDL****

Triumph 500/650 Twins 1963-68 - Part no. **NJB2TRIDL****

Norton Commando 1968-74 models - Part no. **NJB3DL68/74*** 1975 Mk3 Part no. **NJB3DL75***

BSA B25/44 1968 on, B50, Triumph TR25W 1968 on - Part no. **NJB4DL***

Triumph 150 - Part no. **NJB4DLT150***

BMW all Twin shock models from 1970/5 onwards - Part no. **NJB5DLBMW****

Pre Unit Triumph - Part no. **NJB5DLPU****

Triumph Twins (69 on) and BSA Oil-in-Frame Twins (71 on) - Part no. **NJB7DL***

Triumph Tiger Cub - Part no. **NJB8****

BSA A65 (1969-70) - Part no. **NJB9DL***

Longer (12.9") for 63-70 Triumph Twins - Part no. **NJB10DL****

* **Exposed Chrome Springs**
** **Black & Chrome Shrouds**

Girling Replica Shock Cover

Will fit original Girling and also NJB units

4" Chrome Covers
Part no. **9054/47pr**

5" Black Covers
Part no. **9054/151pr**

Special Top Shock Bolt

Norton Commando (Also for Seat Knob)
Part no. **06-0465**

Commando Shock Mounting Kit

1968-74 Models Stainless Steel
Part no. **06-0465KS/S**

Special Wrench

For Adjusting Armstrong and other units
Part no. **P239**

Economy Tool (does the same job)
Part no. **P239E**

NJB Road Racing Shocks

Also recommended for owners of street bikes who want the ultimate in shock absorber performance. We use them on our own street and race bikes. These shocks are built using technology which a few years ago was only available to factory competition teams. For Road Racing, given the specialist nature of most racing machines, we prefer to have NJB build the shocks specifically for individual riders and machines. **Delivery is usually 6 weeks however we can supply more quickly when requested to. "After Sales Service" back up from NJB is superb.**

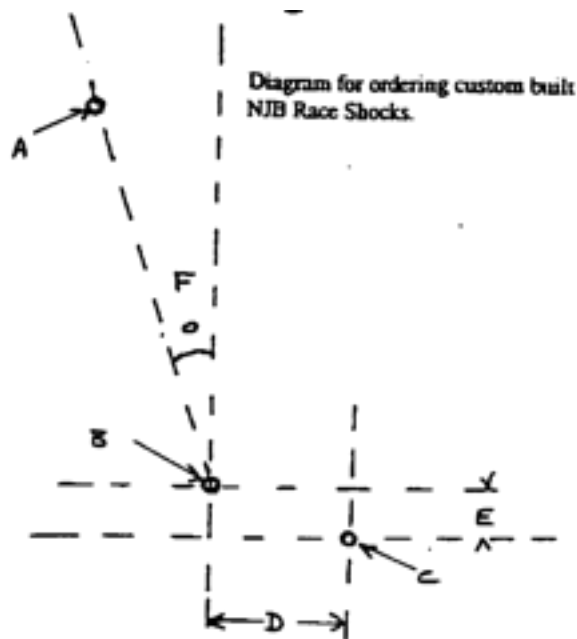
Road Race Shocks

Part no. **NJB-R**

These shocks are normally supplied in the inverted form with the gas/oil reservoir at the top, however they can also be supplied in the traditional manner for a small extra charge. When the reservoir is at the bottom a special gas/oil separator is installed.

For ordering custom built NJB race shocks the following information is required - please refer to the diagram on the right.

1. Weight of rider
2. Weight of motorcycle and weight bias, e.g. 40% front wheel, 60% rear
3. Length of shock between centres of mounting points (A&B)
4. Diameter of mounting points
5. Horizontal distance (D) between lower shock mount (B) and centre of rear wheel spindle
6. Vertical distance (E) as in 5 above
7. Angle of forward inclination (F)



Oriental Replica Shocks

12.9 With Black and Chrome Covers ** (T120 63-68)
Part no. **SHK129E**

12.9 Exposed Chrome * (T120 69-70)
Part no. **SHK129C**

13.4 With Black and Chrome Covers ** (A10/65 etc, P11, G/N12CS)
Part no. **SHK134E**

13.4 With Exposed Chrome * (A65 69-70)
Part no. **SHK134C**

* Exposed Chrome Springs
** Black & Chrome Shrouds

AJS & Matchless Shocks

Oriental Good Quality reproductions of 1957-1962 shocks with alloy lower clevis
Part no. **60092**

Stands

BSA

A65 Side Stand 1971-72
Part no. **83-1560**

Matchless & AJS

Side Stand most models 1950 on includes pivot bolt and nut
Part no. **01-4719**

Norton

For N15CS use Matchless Side Stand
Part no. **01-4719**

Commando 1968-70 Centre Stand
Part no. **06-1116**

Commando 1971 on Centre Stand
Part no. **06-4031**

Commando 1972 on Side Stand
Part no. **06-3389**

Rubber Buffer
Part no. **06-3324**



High Tensile Bolt Genuine
Part no. **06-2872**

High Tensile Bolt Economy (Grade 8)
Part no. **06-2872E**

Spacer
Part no. **06-5491**

Lug to weld to 1968-71 frames to enable later side stand to be fitted
Part no. **06-3049**

Complete Kits Genuine

Side Stand 1972-75
Part no. **06-6357**

Centre Stand 1971-75
Part no. **06-4874**

Triumph

Pre-Unit and some early unit side stand
Part no. **82-3723**

T100 67-74 Centre Stand
Part no. **82-7693**

650 Twins to 1970 & T150 Centre Stand
Part no. **83-1267**

Special Bolt for Stand
Part no. **21-1978**

All Twins and Triples 1968-82 Side Stand
Part no. **83-1560**

Special casting to weld to frame to replace original T100/120 etc side stand lug.
Part no. **83-0035**

650/750 Oil-in-Frame Twins Centre Stand
Part no. **83-4615**

Centre Stand Mounting kit (Inc Spring) 1964-68 650 Triumph twins
Part no. **27514**

Stand Springs

Tip - to install springs and not risk losing your teeth, get some flat washers. Bend the spring one way and then the other way and place the washers between the spring coils to expand the overall length of the spring before fitting to the machine. Remove washers once the spring is in place.

Special Tool to Expand & Fit Springs
Part no. **P228**

BSA A50/65



Centre Stand 1963-70
Part no. **83-2896**

Centre Stand 1971-72
Part no. **83-3793**

Side Stand 1963-72
Part no. **82-8382**

AJS/Matchless Most Models

Side Stand
Part no. **01-0843**

Centre Stand
Part no. **01-4627**

Norton Commando

Side Stand 1972-75
Part no. **06-2592**

Centre Stand 1971-75
Part no. **06-4643**

N15CS- see AJS/Matchless Above



Triumph

Centre Stand
T100 1959-74
Part no. **82-3617**

650 Twins 1963-70
Part no. **82-4671**

750 Triples 1969-76
Part no. **82-4671**

650/750 Twins 1971-82
Part no. **83-3793**

Rear Number Plates**BSA**

A10 etc to 1957
Part no. **67-6830**

Norton/Matchless
G 80 CS K 1963
Part no. **SUND2212**



Atlas & G15CSR machines (Use L564 light unit)
Part no. **02-9431**

N15 CS, G15 CS & G15 MK2
Part no. **02-9427**

P11
Part no. **209760**

P11A/Ranger Rear Number Plate Bracket
Part no. **03-4909**

Triumph

1947-48
Part no. **82-2728**

1952-63
Part no. **82-3363**

Tail Light Fairing Genuine Norton

Commando 1969-72 all models except for
Fastback and LR

Genuine Norton
Part no. **06-1122G**

Reproduction
Part no. **06-1122E**



1973-75 all models apart from JP

Genuine Norton
Part no. **06-3731**

Reproduction
Part no. **06-3731E**

Side Stand
T100 1959-68
Part no. **82-2610**

650 Twins
Part no. **82-2610**

T100 1969-74
Part no. **82-8382**

650 Twins 1968-74
Part no. **82-8382**

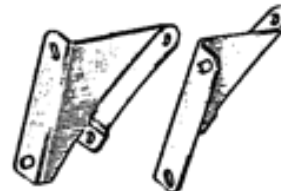
Licence Plate Brackets

Lower Licence Plate Bracket - fits most models
except 1971-72
Part no. **82-6850**

1971-72 Type Brackets - also fit BSA models

Left Hand
Part no. **83-2727**

Right Hand
Part no. **83-2728**



Upper Bracket for 1973 onward models
Part no. **83-4784**

Footrests**BSA & Triumph**

Oil-in-frame Twins 1971 on - Passenger Peg
Assembly, less rubber
Part no. **83-2841**

Folding Arm Only (new old stock)
Part no. **83-7059**

BSA

A50/65 66-70 Folding Passenger
Peg Assembly, Less Rubber.
Part no. **65-4917/26**

Passenger Peg Folding Arm (new old stock)
Part no. **83-7059**

BSA/Triumph – Oil-in-frame twins 1971 on

Passenger peg assembly, less rubber
Part no. **83-2841**

Folding arm only (new old stock)
Part no. **83-7059**

Norton

Commando (Driver's Steel Peg Only)
Part no. **06-2734**

Commando Folding Passenger Peg assembly,
less rubber. Also for Atlas & AJS/Matchless
Part no. **06-2006**

Triumph

Driver's Footrest for 650's
1965-70 Forged with Fittings
Part no. **82-6069/9624**

**Passenger Peg Assembly**

With Rubber for Most Pre Oil-in-frame Bikes
Part no. **82-9369**



Folding Footrest set for 65-70 650's Part no. 82-6653/4

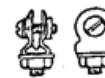


Front Number Plates

Norton/Matchless
G/N15 models and Atlas
Part no. 01-1835



Mounting Posts
Part no. 93-00966



Front number plate with surround as used on
Triumph TRW & other pre-unit models
Part no. 82-2698

Chapter 13: Fenders

All supplied undrilled except for genuine Norton Commando Type

Make/Model	Front/Rear	Type	Part No.
BSA			
A50/65 etc (up to 1970)	F	Chrome	68-6536
	R	Chrome	68-6856
Matchless			
G80/12CSR/15CSR (1960 on)	F	Alloy	03-1591
	R	Alloy	03-1588
G15CS (1966-69) See Norton N15CS Below.			
Norton			
N15CS (1966-69)	F	Chrome	03-1667
	R	Chrome	03-1633
P11 (1967-68)	F	Alloy	03-1591
P11	F	Chrome	03-1667
P11 & P11A	R	Alloy	03-3138
Commando (Not MK3) Genuine	F	Stainless	06-3175
	R	Stainless	06-3887
Triumph			
500/650 pre 1968	F	Bare Steel	97-1677
	R	Bare Steel	82-6965
1968-70	F	Bare Steel	97-3882
	R	Bare Steel	83-1619B

Generally, off road bikes had a double tab on the lower rear front stay and road bikes had one before 1970 in which year they all had two.