

## Rear Wheel Sprocket

Make/Model	Engine Size	Teeth	Part No.
<b>BSA</b>			
A50/65 1965-70 10 Hole	500/650	47	<b>68-6088</b>
A50/65 1971-72	500-650	47	<b>37-3747</b>
<b>Norton</b>			
Atlas, Dominator & Early Commando with bolt up sprocket/brake drum (5/8" & 3/8" chain size)	500/750	43	<b>06-0319</b>
Special Stainless Steel Sleeve Nut for 06-0319			<b>06-0323S/S</b>
Later Commando models with cush rear drive (not MK3)	750/850	42	<b>06-2764</b>
<b>Triumph</b>			
500/650 models 1962-70 8 hole sprocket	500/650	46	<b>37-1499</b>
T120/TR6 1971 on	650	47	<b>37-3747</b>
T140/TR7 1976 on	750	45	<b>37-7072</b>
		47	<b>37-7016</b>
Sprocket Bolt & Serrated Washer Set Triumph 1960-70	500/650		<b>21-2010A</b>

## Indian Made Economy Sprockets

Make/Model	Engine Size	Teeth	Part No.
<b>Norton</b>			
Commando 1971-74	750/850	42	<b>06-2764E</b>
Commando 1975	850(ES)	42	<b>06-6011E</b>

## Chapter 11: Speedometers and Tachometers



The instruments we list here are reproductions of original SMITHS speedos and tachs and give good service. We also offer a top quality restoration service for original Chronometric and Magnetic instruments. Generally speaking, Chronometrics were used up to 1963 and Magnetics thereafter. The cost of restoration is substantially reduced if you have original instruments to trade in as cores.

Please note that the reproduction instruments we carry are deeper than originals and will not fit BSA rubber holders (up to 1970) or pre 1974 Commando's. If fitting to 1974-5 Commando's the trip knob has to be carefully cut off and will be inoperative.

## Speedos

### Grey Faced Instruments

2:1 Ratio – suit T100 (to 1969),  
T120/TR6 (64-66), Norton Atlas/  
G/N15 & P11  
Part no. **26652 (mph)**

1.25:1 Ratio – suit T120/TR6 (67-69),  
A50/65 (67-69)  
Part no. **26675 (mph)**  
Part no. **26675K (kph)**

### Black Faced Instruments

2:1 Ratio – suit T100 (70-74)  
Part no. **26651 (mph)**  
1.25:1 Ratio – suit T120/TR6 (70-77), A65 (70-72)  
and Norton Commando (all, see comments above)

Part no. **26661 (mph)**  
Part no. **26661K (kph)**  
1.25:1 Ratio – suit Oil in frame BSA &  
Triumph models (1971 on)

Part no. **26664**  
1.25:1 Ratio – suit Triumph twins 1978 on (will  
work on earlier models)  
Part no. **26664 (mph)**  
Part no. **26664K (kph)**

## Tachometers

### Grey Faced Instruments

4:1 Ratio suit Triumph twins and triples (66-69)  
Part no. **26677**

3:1 Ratio suit BSA A50/65 (to 1969)  
Part no. **26681**

### Black Faced Instruments

4:1 Ratio suit Triumph 500/650/750 models (70-77)  
Part no. **26662**

4:1 Ratio suit 1978 onwards Triumphs, will work on  
earlier models  
Part no. **26663**

3:1 Ratio suit BSA twins 70-72  
Part no. **26680**

## Speedometer Mounting Cups (Binnacles)

### BSA

A50/65 1962-66 – Rubber grommet to hold  
Instruments in metal cup  
Part no. **68-9138**

A50/65 and several other models 1967-70  
Mounting rubber binnacle  
UK Made  
Part no. **68-9415UK**  
Reproduction  
Part no. **68-9451**



## BSA/Triumph

Mounting Bracket for Oil-in-Frame bikes  
Part no. **97-4026**

Mounting Rubber (Good quality made  
in England)  
Part no. **60-2600**



Metalistic Bushes for Tach/Speedo bracket fitted  
to 1963-70 Triumph Twins  
Part no. **97-1929**

## Speedo & Tach Parts

### Glass, bezel and gasket kits

#### Chronometric Types

For models without flange  
Part no. **09-00598**

For Triumph models with flange (ie to  
Fit in headlight or nacelle)  
Part no. **09-00450**

For BSA/AJS/Matchless with flange  
Part no. **09-00599**

#### Magnetic Instruments

Part no. **09-00515**

#### Bezels (Made in England)

Chrono type -no flange  
Part no. **26667**

Chrono type – top flange (Triumph)  
Part no. **26668**

Chrono type – bottom flange (BSA,  
AJS, Matchless type)  
Part no. **26669**

Magnetic Type  
Part no. **26670**

#### Other Instrument Parts

#### Chronometric Instruments

Internal Gaskets:

Upper	Lower
Part no. <b>MJC080PGT</b>	Part no. <b>MJC080PGB</b>
Glass	

Part no. **99-SMITH/CHRONO**  
Glass Sealing Ring  
Part no. **NBR60**

#### Magnetic Instruments

Glass	Gasket above Glass
Part no. <b>99-SMITH</b>	Part no. <b>99-SMITH/G1</b>
Gasket under Glass	Lower Grommet
Part no. <b>JRC2409</b>	Part no. <b>JRC2408</b>
Screw	Washer
Part no. <b>99-SSM/SCREW</b>	Part no. <b>MJC0SSMW</b>

*Rebuild Kit (3 ea screws, washers & rubbers)*

*Part no. 09-00340*

*Reset Knob 50mm*

*Part no. 09-00140*

*Reset Knob 38mm*

*Part no. 09-00140/38*

### Tachometer Drives

*Norton Atlas/ G/N15 etc 1:1 Ratio*

*Part no. BG1508/05*

*Early Commando 2:1 Ratio*

*Part no. BG1508/06*

*71 Onwards Commando type*

*From Norvil with special oil seal*

*Part no. 06-5200C*



## Chapter 12: Frame Parts

### Swing Arm Bushes & Related Parts BSA

*A50/65 1963-68 Bush (Metalastic)*

*Part no. 42-4362*

**BSA/Triumph Oil-in-frame Twins**

*Swing Arm Spindle*

*Part no. 83-2691*

*Bush*

*Part no. 83-2521*

*Rubber Sleeve*

*Part no. 83-2692*

**Norton/Matchless P11**

*Bush (4 required)*

*Part no. 03-2184*

**Norton Commando**

*Featherbed, inc Atlas*

*Metalastic Bushes (Pr)*

*Part no. 06-7767*

*Kit of Bronze bushes to replace 06-7767*

*Part no. 06-7767A*

**Commando**

*Swing Arm Spindle*

*Part no. 06-0453*

*+.005" Oversize Spindle*

*Part no. 06-0453A*

*Bush*

*Part no. 06-0447*

*Large 'O' Ring*

*Part no. 06-0449*

*Small 'O' Ring*

*Part no. 06-0448*

**Triumph**

**T100 1969-74**

*Spindle*

*Part no. 82-7342*

*Bush*

*Part no. 82-4076*

### 650 Unit Construction Twins (to 1970) & T150 Models

*Bobbin (sleeve)*

*Part no. 82-6821*

*Bobbin Bush*

*Part no. 82-6042*

*'O' Ring*

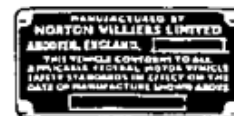
*Part no. 82-8090*

### Frame ID Plate

**Norton Commando**

*Rivets for plate (4 required)*

*Part no. 06-1287*



*750 Models 1968-70*

*Part no. 06-1286*

*750 Models 71-73*

*Part no. 06-3247*

*850 Models 73-74*

*Part no. 06-3247*

*850 Models 75 (USA)*

*Part no. 06-6213*

### UK Licence Disc Holder

*Stainless Steel*

*Part no. C171A*



### Grab Rails (Lifting Handles)

**BSA**

*A50/65 to 1970 Chrome*

*Part no. 68-9327*



**Norton**

*Dominator/Atlas Chrome*

*Part no. 98-0792*

**Commando**

*Chrome Regular UK Made Quality*

*Roadster*

*Part no. 06-4978*



*Interstate*

*Part no. 06-3632*

**Genuine Norton**

*Roadster*

*Part no. 06-4978G*

*Interstate*

*Part no. 06-3632G*

*Genuine Grab Rail Clips (4 Required)*

*Part no. 06-3641*